



## HT80 Specifications

### Applications:

The HT80 turnstile provides full height security with an aluminum profile frame. It is frequently used in factories and corrosive environments when aesthetics and frame materials are important considerations.

### Product Finish:

Clear anodized. Other finishes upon request.

### Design & Construction:

- Designed for secure operations with visual appeal
- Anodized aluminum frame with clear lifetime finish
- Aluminum ovaline arms
- High impact durable Lexan glazing (yoke)
- Stainless fasteners
- Hardened tool steel locking bars, cams and roller assemblies
- Permanently lubricated sealed bearings

### Turnstile Operation:

- Choice of right or left-handed direction
- Self-centering mechanism with hydraulic shock suppression

- Fail-Safe (free passage on power failure)
- Fail-Lock (locked passage on power failure)
- Easily integrates to access control and fire safety systems
- Interfaces with card readers, biometrics, wireless remotes and push buttons.

### Options:

- Card reader mounting plates
- Electronic resettable counter with LCD display and 7-year lithium battery
- Red/Green indicator lights
- Low voltage canopy lighting
- Tailgate detection
- Additional options upon request.

### Electrical Specifications:

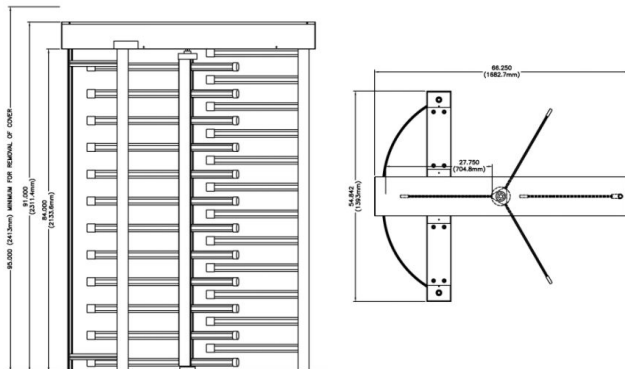
Power supply input 100-240VAC (.7 amp) 50/60hz output 24VDC (1.3 – .55 amp) UL Approved

### Warranty:

Units are warranted against defects in materials and workmanship for one year.



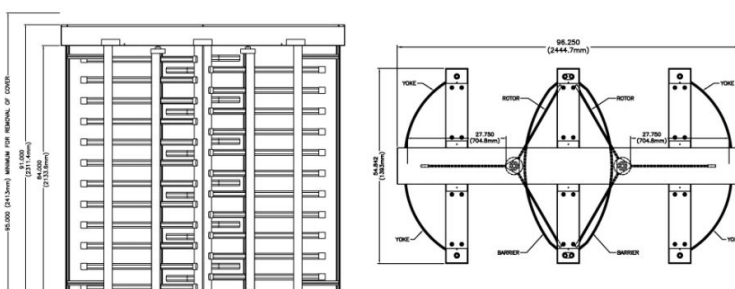
## HT80 Standard Dimensions



### Dimensions

EXTERIOR HEIGHT	91.000"
INTERIOR HEIGHT	84.000"
WIDTH	66.250"
PEDESTRIAN CLEARANCE	27.750"

## HT80T Tandem Dimensions



### Dimensions

EXTERIOR HEIGHT	91.000"
INTERIOR HEIGHT	84.000"
WIDTH	96.250"
PEDESTRIAN CLEARANCE	27.750"