

**Phone:** 203-647-9147

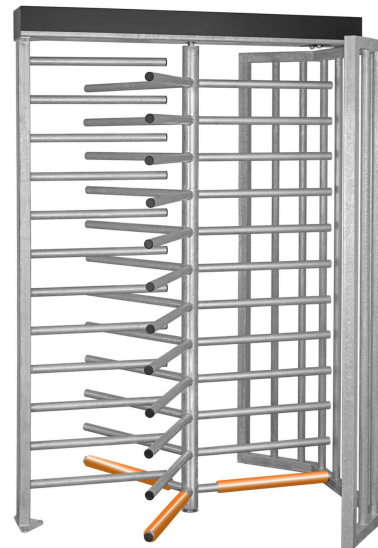
**Fax:** 203-200-7886

**Email:** [sales@haywardts.com](mailto:sales@haywardts.com)

**Mail:** 160 Wampus Lane  
Milford, CT 06460

## **HT431 Full Height Turnstile**

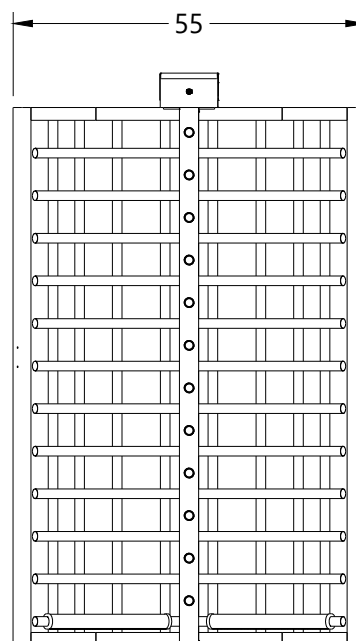
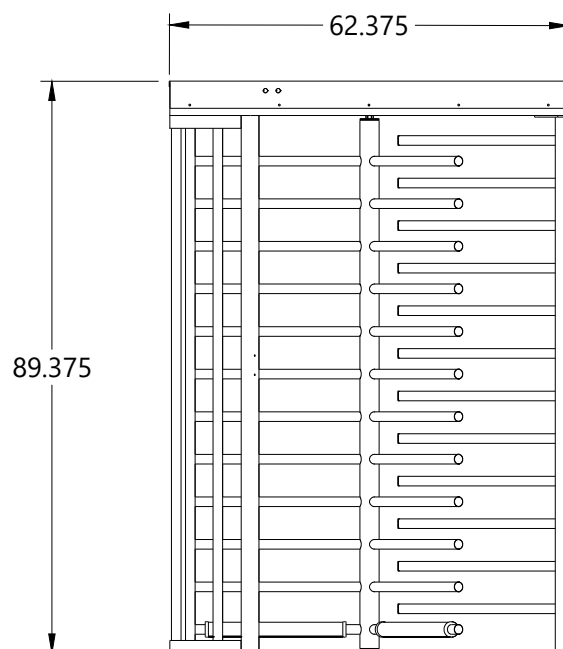
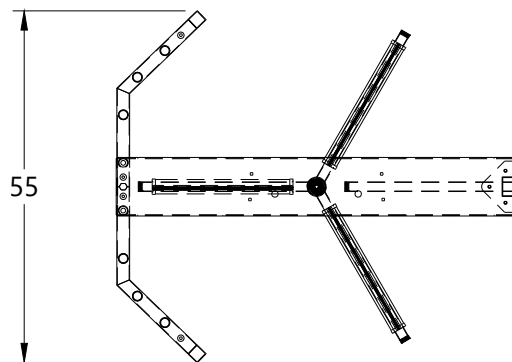
### **Complete Dimensions and Mounting Information**





## REVISIONS

ZONE	REV	DESCRIPTION	DATE	APPROVED
------	-----	-------------	------	----------



## HT431 Galvanized



Unless otherwise specified, all  
dimensions are in inches.

.XXX +/- .005

.XX +/- .010

.X +/- .03

Surface finish 125 RMS Max

Break all edges & sharp corners

This drawing is the property of Hayward Turnstiles, Inc.,  
and contains proprietary information. It may not be  
copied, reproduced or transmitted in any manner to a  
third party without prior written permission from  
Hayward Turnstiles, Inc.

## HAYWARD TURNSTILES, INC.

TITLE

## HT431 Full Height Turnstile (galv)

Material: Steel

Finish: Galvanized

Drawn: MM-1/15/22

SIZE

A

CODE

DWG NO

HT431-GV

REV

SCALE

1:25

WEIGHT

SHEET

1/1

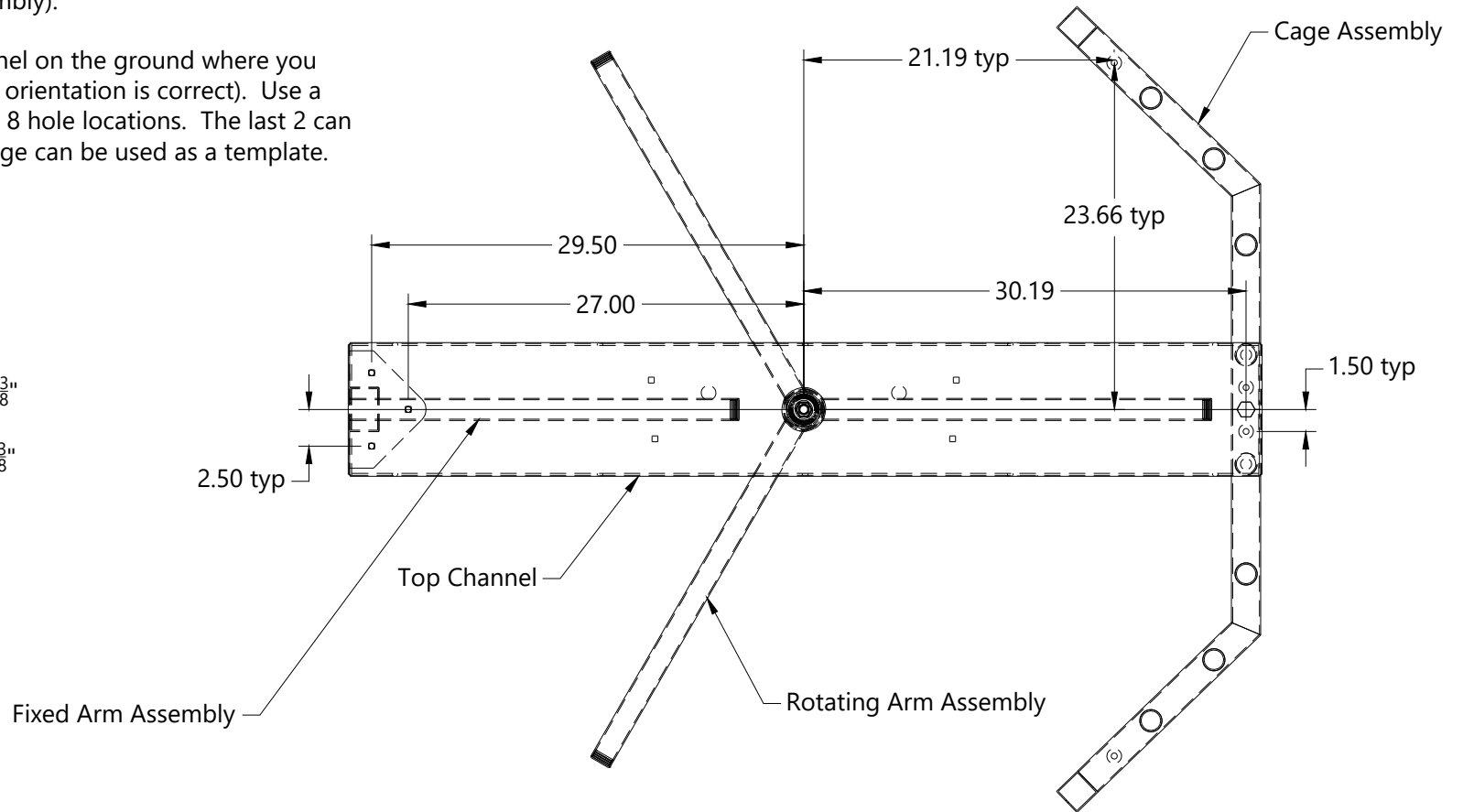


All measurements are referenced from the center of the rotating arm assembly.

A total of 8 holes need to be drilled in the floor to mount the turnstile (3 for the fixed arm assembly, 1 for the rotating arm bearing & 4 for the cage assembly).

Hint: you can lay the top channel on the ground where you want the turnstile (be sure the orientation is correct). Use a magic marker to trace 6 of the 8 hole locations. The last 2 can either be measured or each cage can be used as a template.

Overall Length  $62\frac{3}{8}"$   
Overall Width 55"  
Overall Height  $89\frac{3}{8}"$



This drawing is the property of Hayward Turnstiles, Inc., and contains proprietary information. It may not be copied, reproduced or transmitted in any manner to a third party without prior written permission from Hayward Turnstiles, Inc.

**HAYWARD TURNSTILES, INC.**

TITLE

**HT431 Mounting Hole Locations**

Material:

Finish:

Drawn: MM 1/18/22

SIZE

A

CODE

DWG NO

**HT431 Holes**

REV

SCALE

1:16

WEIGHT

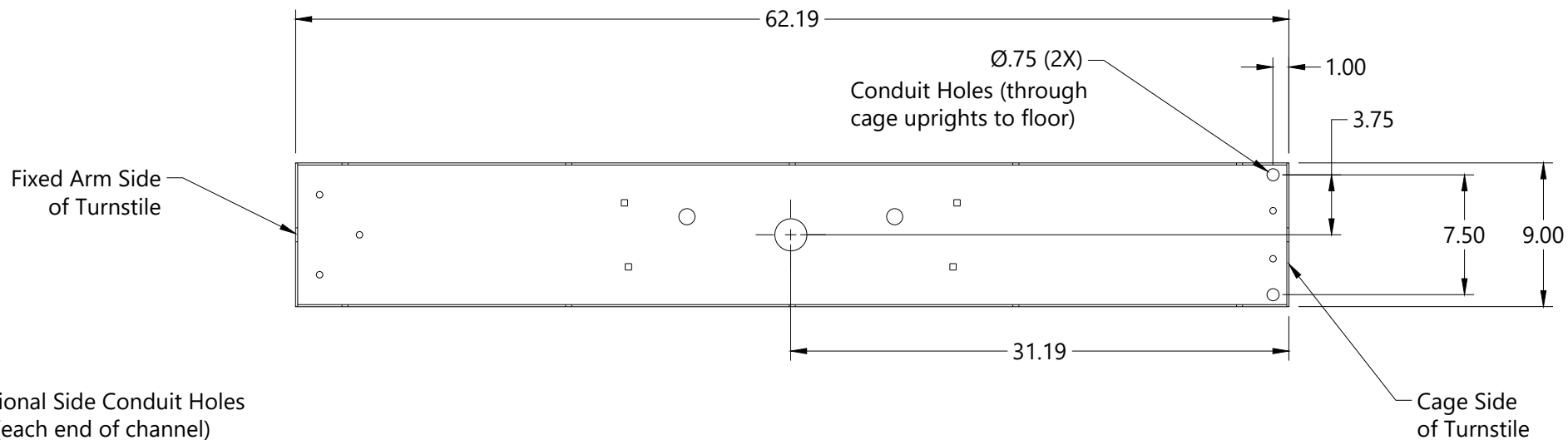
SHEET

1/1

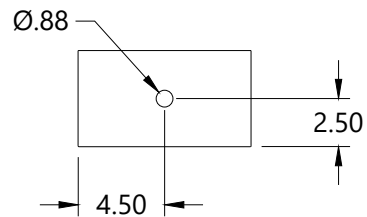
Unless otherwise specified, all dimensions are in inches.

WIRING NOTES: Do not run low voltage and high voltage in the same conduit. Be sure to bond the turnstile according to local code. Every installation is different so the HT431 was designed to accomadate many different wiring configurations. Wiring can be run from the floor up through any of the cage section uprights and into the top channel. Additionally, wiring can be run from a wall directly into the top channel at either end.

REVISIONS				
ZONE	REV	DESCRIPTION	DATE	APPROVED

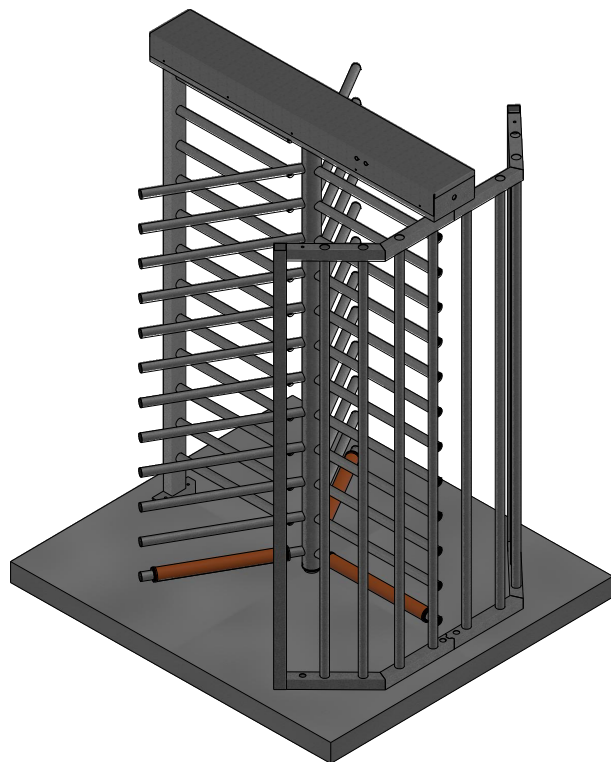


Optional Side Conduit Holes  
(each end of channel)



Unless otherwise specified, all  
dimensions are in inches.

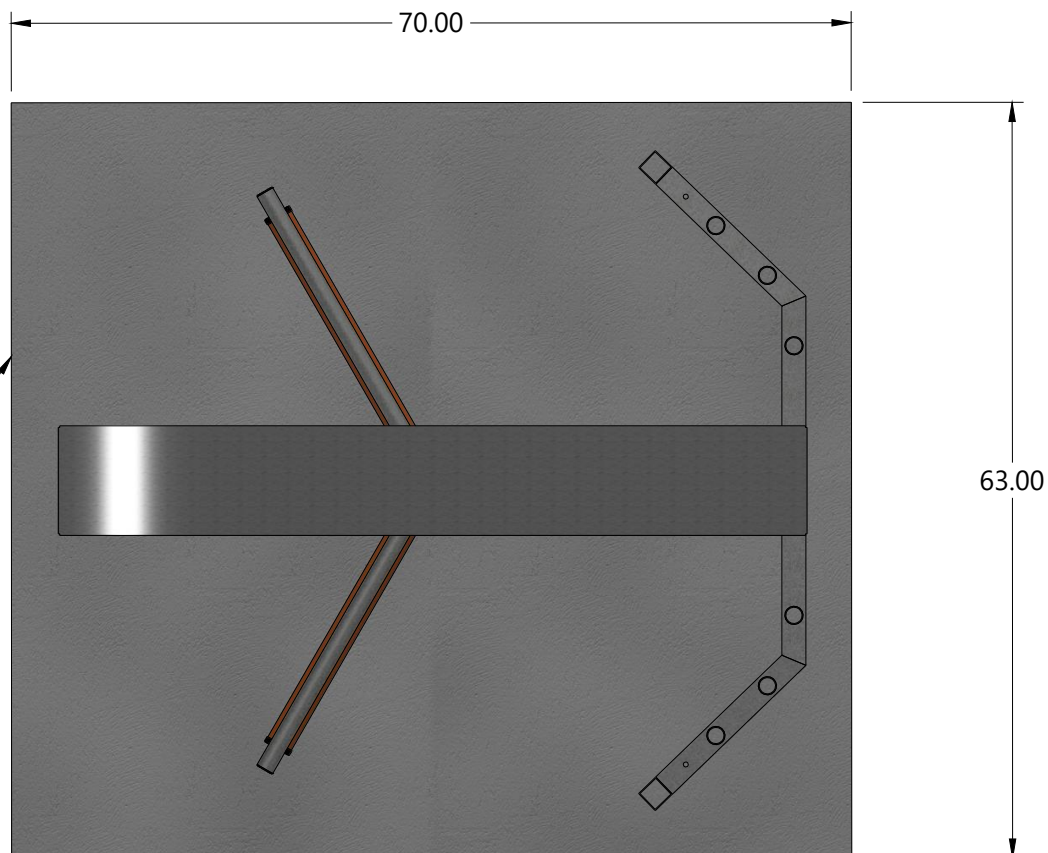
This drawing is the property of Hayward Turnstiles, Inc., and contains proprietary information. It may not be copied, reproduced or transmitted in any manner to a third party without prior written permission from Hayward Turnstiles, Inc.		HAYWARD TURNSTILES, INC.		
		TITLE HT431 Conduit Holes		
Material:	SIZE A	CODE	DWG NO HT431 Conduit	REV
Finish:				
Drawn: MM	SCALE 1:10	WEIGHT	SHEET 1/1	



4.0 min thick  
concrete pad

**Concrete pad must be level**

REVISIONS				
ZONE	REV	DESCRIPTION	DATE	APPROVED



This drawing is the property of Hayward Turnstiles, Inc., and contains proprietary information. It may not be copied, reproduced or transmitted in any manner to a third party without prior written permission from Hayward Turnstiles, Inc.

**HAYWARD TURNSTILES, INC.**

TITLE

**HT431 Concrete Pad**

Material:

Finish:

Drawn: MM 1/18/22

SIZE

A

CODE

DWG NO

**HT431-CP**

REV

SCALE

WEIGHT

SHEET

1/1

Unless otherwise specified, all  
dimensions are in inches.