



HAYWARD
TURNSTILES, INC.

Reliable
& Affordable
Quality



MODEL DecoStile WAIST HIGH TURNSTILE



Hayward Turnstiles Inc. (203) 877-7096 160-A Wampus Lane, Milford, CT 06460 U.S.A

WWW.HaywardTurnstiles.com



HAYWARD
TURNSTILES, INC.

Reliable
& Affordable
Quality



MODEL DecoStile

WAIST HIGH TURNSTILE

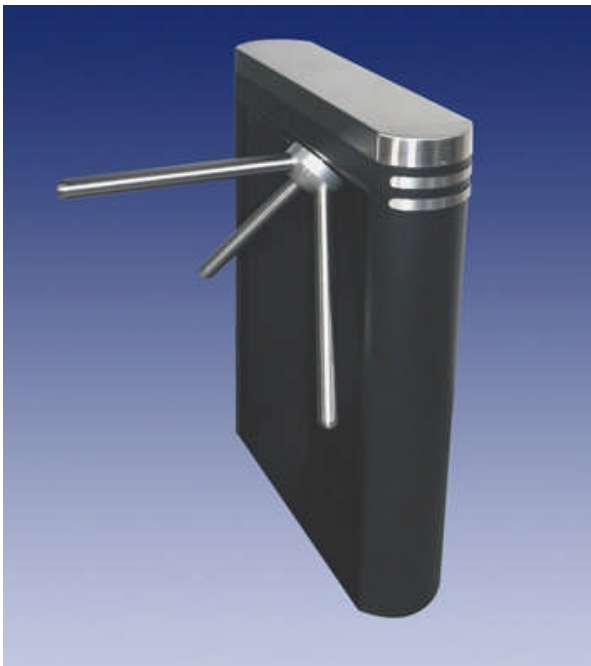
General Description

The DecoStile is a heavy-duty access control turnstile with rounded ends and wrap around stainless steel bands for an Art Deco look. This quality product with its eye-appealing design has many applications and is ideal for system integration with proximity card readers, bar code readers, coin and token acceptors or to be integrated with an existing security system.

The DecoStile cabinet with its rounded ends is supplied in tough wear resistant powder coat epoxy paint (black, semi-gloss textured finish is our standard: other colors available as options) and come with 7/8" stainless bands wrapped for a unique look.

The passage can be electrically controlled in one direction or both directions. Alternatively, the turnstile may be made to rotate freely in both directions (this functionality is used to simply count people passing).

MAIN FEATURES AND ADVANTAGES



Model DecoStile Turnstile (standard black finish)

- **Lo/No Maintenance** – the turnstile mechanism has been designed to virtually eliminate maintenance. This means little or no downtime, and no costly maintenance calls.
- **Double wall construction** – acts as a concealed conduit for running wires from the floor to the card reader and mechanism.
- **Style** – the DecoStile has sleek clean lines, rounded ends and an Art Deco appearance to complement its surroundings.
- **Quality** – every aspect of design, manufacture and assembly is strictly controlled for quality.
- **Smooth operation** and accurate control comes from a precision mechanism built to the standard required on mass transit systems.
- **Interface** - electronic or serial interfaces are available.
- **Integration** – the design facilitates integration with existing or new access systems.
- **Card reader mount** - the top cover allows ample space to mount a variety of access control reader devices.
- **Low cost** - through design quality, Lo/No maintenance and competitive pricing.

Applications

The DecoStile provides security admission and crowd control for office buildings, convention centers, health clubs, sports facilities, stadiums, and amusement parks.

Hayward Turnstiles Inc. (203) 877-7096 160-A Wampus Lane, Milford, CT 06460 U.S.A

WWW.HaywardTurnstiles.com



HAYWARD
TURNSTILES, INC.

Reliable
& Affordable
Quality



FEATURES

CONSTRUCTION

Cabinet and frame details:

The cabinet consists of steel panels welded to a base mounting plate. The stainless steel lid covers the mechanism and provides ample space to mount card readers and indicator lights.

The DecoStile Turnstile is built using a double wall construction with attractive radius ends and stainless steel wrap around bands. The double wall acts as a concealed conduit for running wires from the floor to the card reader and mechanism.

Materials:

The main framework is manufactured of 14 gauge (0.075) carbon steel.

The finish is of tough wear resistant powder coat epoxy paint. Black, semi-gloss textured finish is our standard (other color options available).

The lid is manufactured from 16ga stainless steel and polished smooth.



MECHANISM

The main mechanism components are precision cut by laser from steel, then hardened, black oxide finished and oil coated for maximum protection.

A heavy-duty hydraulic damper ensures smooth rotation of the turnstile arms and a soft return to the home position after every passage. The damper used by the DecoStile is chosen for its reliability and long life. The damper has a service life of over 10 million cycles.

All springs are made of stainless steel and are carefully rated for a long service life. The bright anodized aluminum hub securely holds the three stainless steel arms. The arms are finished with special hemispherical end caps, welded on for safety, ground smooth and polished for appearance.

Bearings:

The sealed main hub and shaft bearing is self-centering.

Roller bearings on the homing cam are grease packed for maximum life.

All stainless steel pivot points use oil impregnated bronze bearings for smooth operation and long wear life.

Hayward Turnstiles Inc. (203) 877-7096 160-A Wampus Lane, Milford, CT 06460 U.S.A

WWW.HaywardTurnstiles.com

OPTIONS

1) **Portable Feature:**

The Portable DecoStile incorporates a sturdy non-slip, diamond tread base plate with an attached guide rail. The width of the passageway between cabinet and rail is 18.5 inches. The Guide Rail is made from brushed stainless steel tubing 1¼ inch in diameter. Mounted to the back of the base plate are two high-density polyurethane wheels, 3 inches in diameter to facilitate movement of the DecoStile over most surfaces.

2) **Tamper proof admission registers:**

Admission counters may be provided. These counters have large six digit liquid crystal displays and are powered by a 10 year lithium battery. The DecoStile may be ordered with one or two counters:

- a. Entry counter
- b. Exit counter
- c. Both entry and exit counters

The counters are capable of being reset with a key (option).

3) **Electronic Operation:**

This option includes an unlocking solenoid and electronic interface board with adjustable time control (standard) capable of controlling one direction of traffic through an access control device (card reader, RFID, biometric reader). The adjustable time control may be used for automatic relocking of the turnstile if entry is not completed (adjustable from 0.5 to 60 seconds). All our turnstiles operate from low voltage 24 VDC.

4) **Out of Service lock:**

Manually place the turnstile out of service using a key lock.

5) **Fail Safe:**

Enables the turnstile to allow passage in the event of power failure.

6) **Status Lights:**

Red and Green high intensity LEDs provide status indicators that can be mounted in the lid or on the end of the cabinet.

They may be used in conjunction with a card reader to indicate the turnstile status, locked ready for presentation of card or equivalent entry token (red LED) or to indicate the turnstile is unlocked and ready for passage (green LED).

7) **Step Down Transformer:**

120VAC to 24VDC step down transformer available.

8) **Token Operation:**

The DecoStile can be equipped with an electronic coin or token acceptor which can be set for any size token or coin.



DecoStile (shown with portable option)